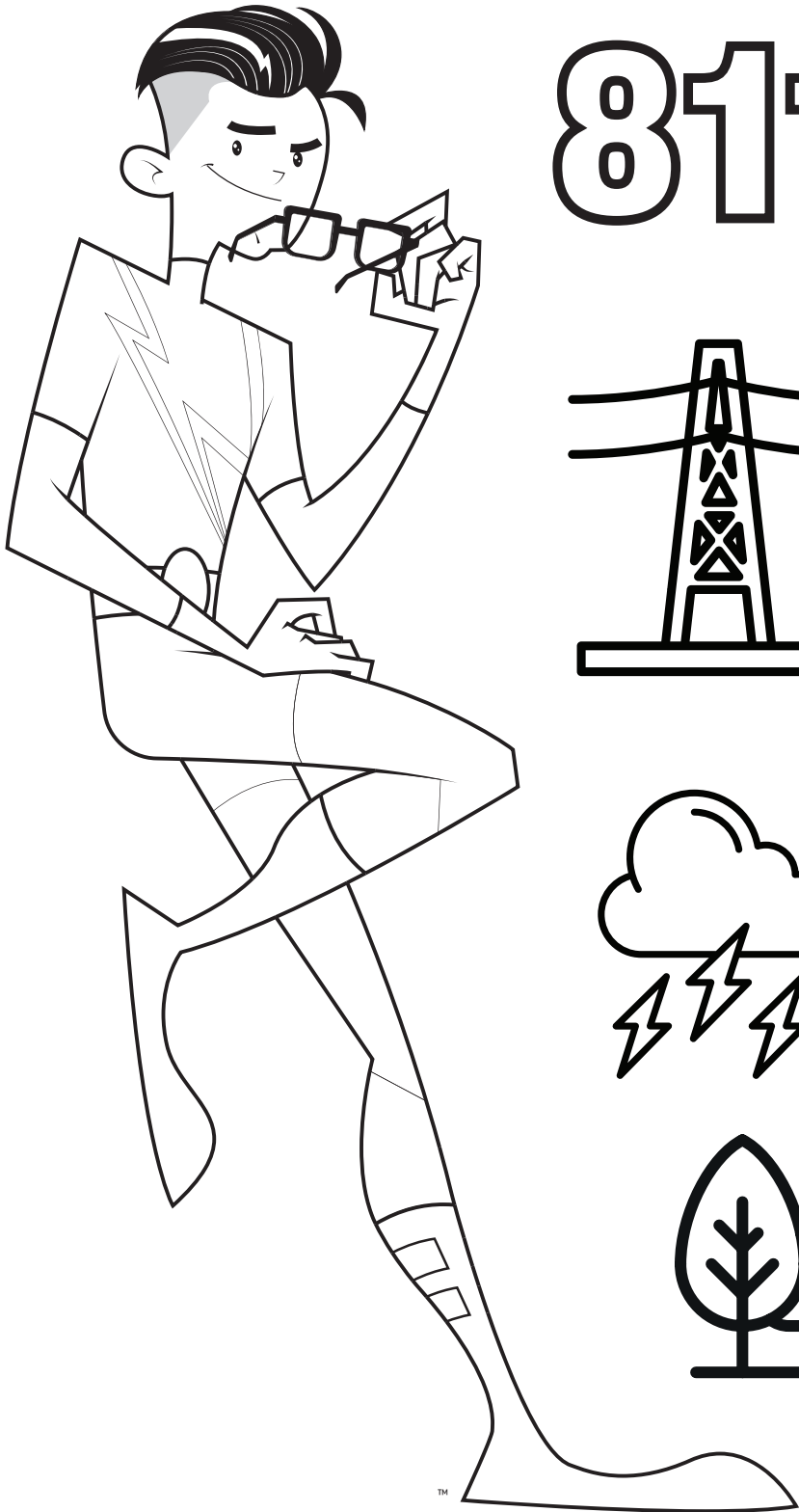
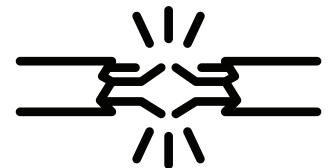
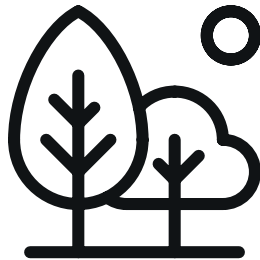
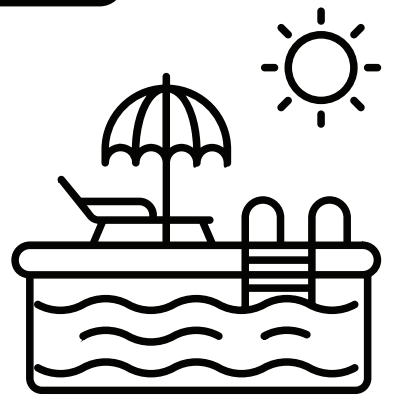
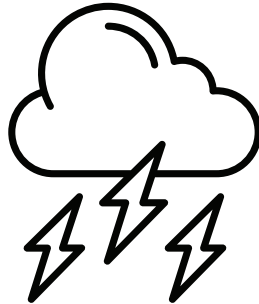
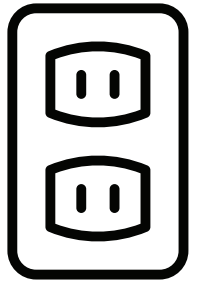
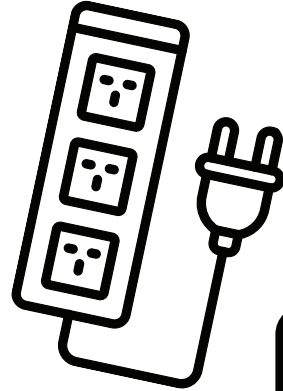
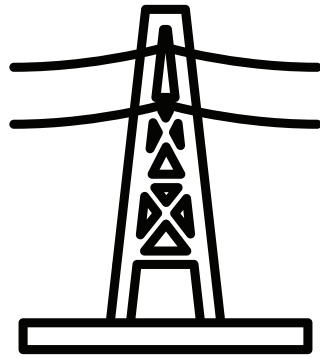
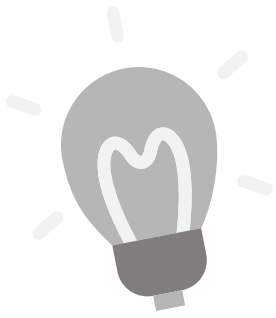


ELECTRICAL SAFETY



811





ELECTRICAL SAFETY



Complete the instructions on each square using the images on the front of this activity.

Lightning is dangerous and can hit all sorts of things!

Cross out the trees that lightning could hit.

Make sure that you never touch a frayed electrical cord.

Put an **X** over the frayed cord.

Use advanced power strips to avoid overloading outlets.

Color the advanced power strip **green**.

Outlets are NOT for touching.

Color the outlet **yellow**.

Which number should you call before you dig?

Draw a **star** over it!

Be careful to never use electrical appliances near water.

Put a **star** on top of any water you see.

Power lines are NOT for touching.

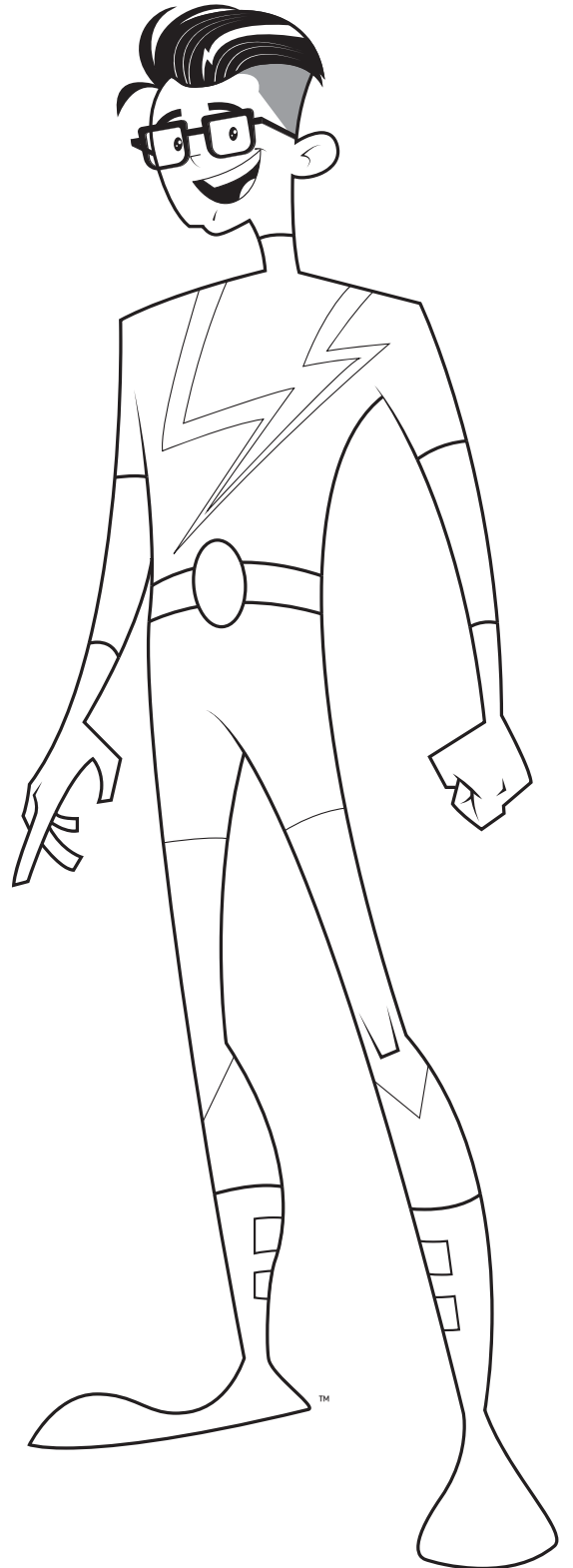
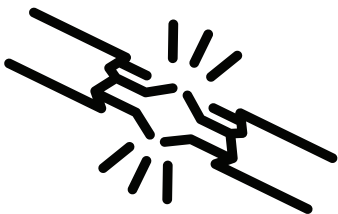
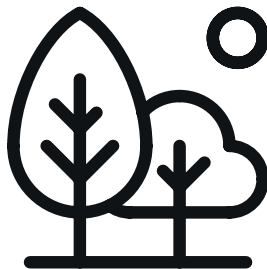
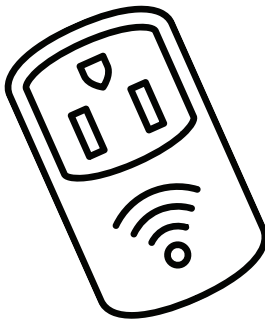
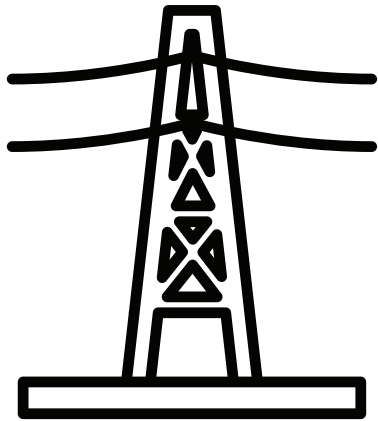
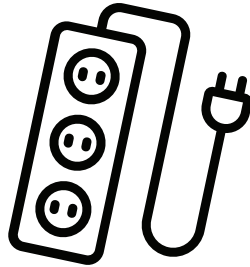
On the power lines, write **S** for safe or **NS** for not safe.

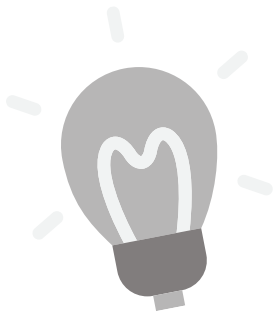
For safety, go inside when there is a storm outside.

On the storm cloud, write **S** for safe or **NS** for not safe.

ELECTRICAL SAFETY

811





ELECTRICAL SAFETY



Complete the instructions on each square using the images on the front of this activity.

Lightning is dangerous and can hit all sorts of things!

Cross out the trees that lightning could hit.

Make sure that you never touch a frayed electrical cord.

Put an **X** over the frayed cord.

Use advanced power strips to avoid overloading outlets.

Color the advanced power strip **green**.

Outlets are NOT for touching.

Color the outlet **yellow**.

Which number should you call before you dig?

Draw a **star** over it!

Be careful to never use electrical appliances near water.

Put a **star** on top of any water you see.

Power lines are NOT for touching.

On the power lines, write **S** for safe or **NS** for not safe.

For safety, go inside when there is a storm outside.

On the storm cloud, write **S** for safe or **NS** for not safe.